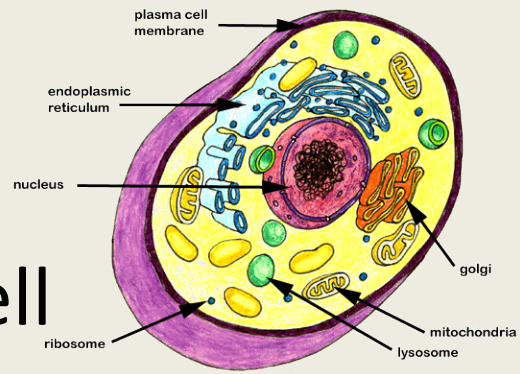


# Warm Up



A. Plasma Membrane

B. Cell

C. Nucleus

D. Cell Theory

E. Cytoplasm

1. Controls center of the cell
2. Basic unit of structure in a living thing
3. Set of three statements that sums up the relationship between cells and living things
4. Protective layer that the cell in all living things have
5. Living material between the cell membrane and the nucleus