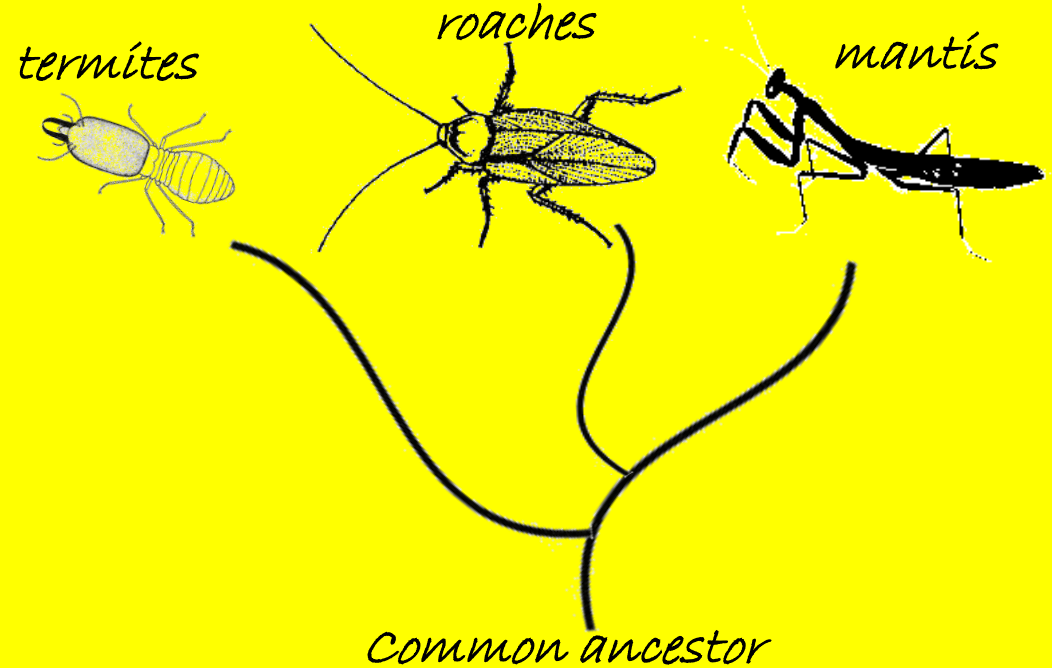


# Warm Up



What is true about these three groups of insects?

- A. Roaches and mantis share a more recent common ancestor than do roaches and termites.
- B. Roaches and mantis share a more recent common ancestor than do mantis and termites.
- C. Roaches, termites and mantis share a common ancestor.
- D. A and C only
- E. B and C only
- F. A, B and C