

# WARM UP

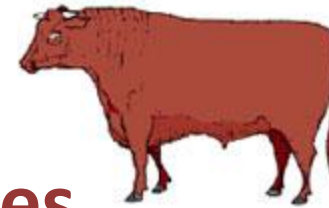
Coat color of shorthorn cattle is an incomplete dominant trait.

Red shorthorn cattle have RR genes.

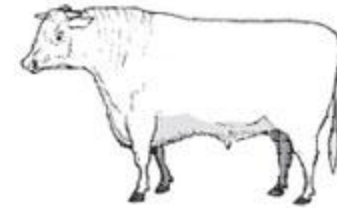
White shorthorn cattle have WW genes.

Roan shorthorn cattle have RW genes.

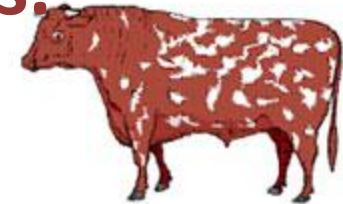
pure red  
(RR)



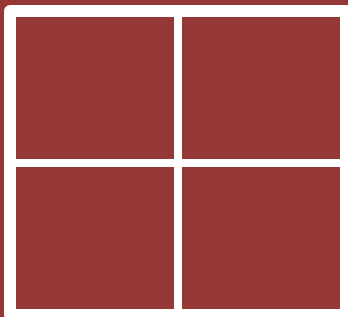
pure white  
(WW)



roan  
(RW)



DETERMINE THE GENES OF OFFSPRING  
OF ONE RED AND ONE ROAN PARENT.



\_\_\_\_\_ % of offspring with red coats

\_\_\_\_\_ % of offspring with white coats

\_\_\_\_\_ % of offspring with roan coats