

PLANT ~ PART 6

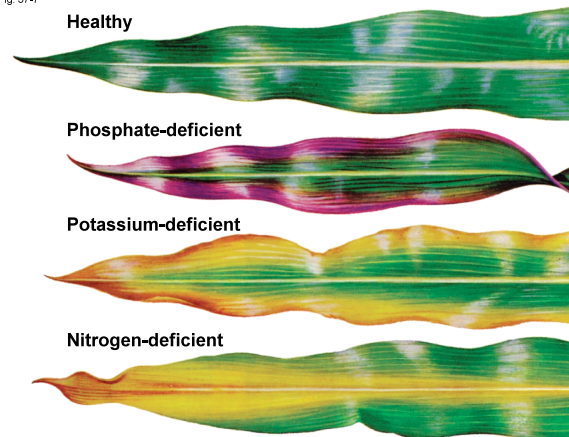
PLANT NUTRITION

Plants require essential elements to complete their life cycle

- Plants derive most of their organic mass from the CO₂ of air, but they also depend on soil nutrients such as water and minerals
- Essential elements→

| | |
|--|--|
| | |
| | |
| | |

Fig. 37-7



Copyright © 2008 Pearson Education, Inc., publishing as Pearson Benjamin Cummings

Symbiotic Relationship = nitrogen-fixing bacteria + legumes

